

DELUXE DRILL PRESS TABLE WITH ALUMINUM FENCE

Version 1.0

Safety First



Disconnect saw from power source before fitting or removing insert.



Always wear proper ear protection when working with machinery.



Use caution when handling sharp objects (saw blades, router bits, drill bits and so on). Use protective gloves whenever possible.



Always wear proper eye protection when working with machinery and tools.

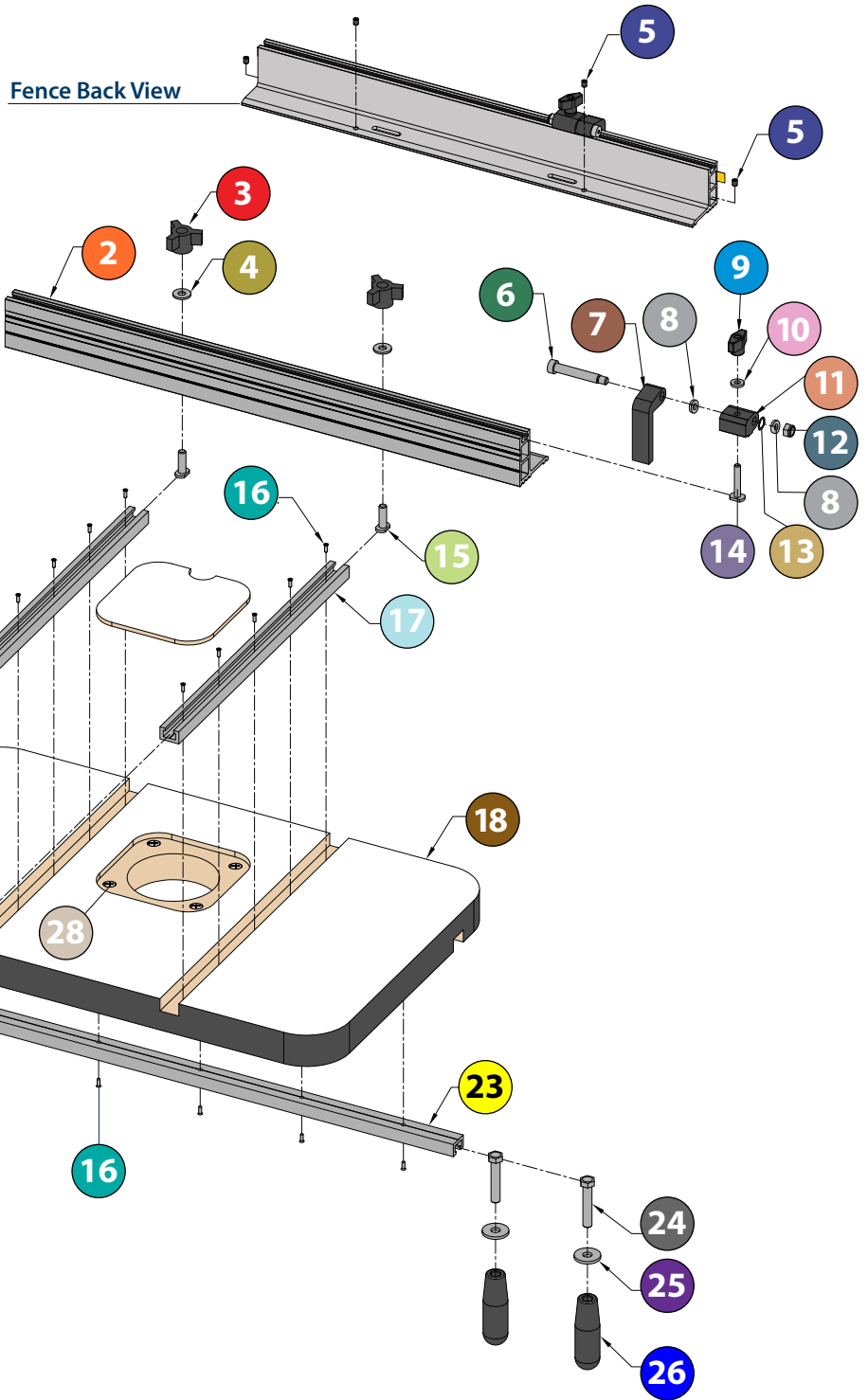


Always wear proper respiratory protection when working near airborne dust particles.

Please read and fully understand any and all safety materials that came with your power tools or machinery before operation. Always follow all safety guidelines set in place by the power tool or machine manufacturer.



DELUXE DRILL PRESS TABLE and PRECISION FENCE ASSEMBLY



SOME ASSEMBLY REQUIRED

Follow this exploded view drawing to assemble the drill press table, fence and accessories

No.	Description	Qty
1	24" Sticky Back Measuring Tape	1
2	Precision Aluminum Extruded Fence	1
3	5/16"x18 Threaded Knob	2
4	5/16" Washer	2
5	Fence Leveling Set Screw	4
6	Threaded Axle	1
7	Flip Stop	1
8	Plastic Washer	1
9	T-Knob	1
10	Washer	1

No.	Description	Qty
11	Flip Stop Body	1
12	Lock Nut	1
13	Wavy Lock Washer	1
14	T-Bolt	1
15	5/16"x18 T-Bolt	2
16	Wood Screw	15
17	15" Long T-Track	2
18	1-3/8" Thick MDF Drill Press Table	1
19	3/8" Threaded Star Knob	2
20	Aluminum Hold Down Bar	2

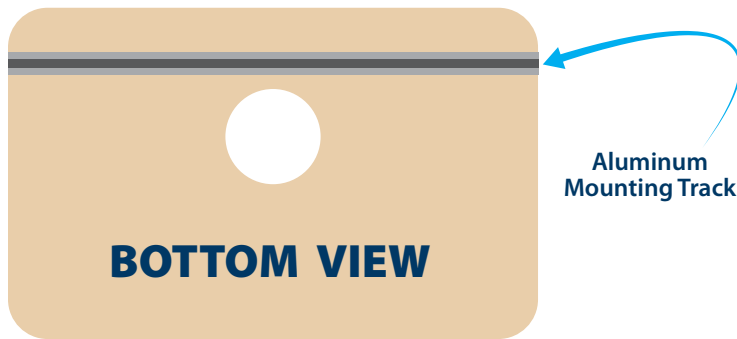
No.	Description	Qty
21	Rubber PVC Tip	4
22	3/8" x 16 Threaded Hex Head Bolt	2
23	24" T-Track	1
24	3/8" x 16 x 2" Hex Head Bolt	2
25	3/8" Washer	2
26	3/8" x 16 Post Knob	2
27	Laminated MDF Zero Clearance Insert	2
28	Leveling Screw for ZCI plate	4

HOW TO MOUNT YOUR TABLE TOP

Before mounting the drill press table, you must determine the best mounting method. Your mounting method is determined by the type of cast iron table that is on your drill press. There are two basic types of cast iron table tops and two basic mounting methods.

ALUMINUM MOUNTING TRACK

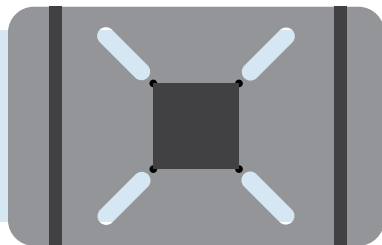
WILL BE USED FOR BOTH MOUNTING METHODS



The Aluminum Mounting Track that is secured to the bottom of the drill press table makes mounting the Deluxe Drill Press Table quick and easy.

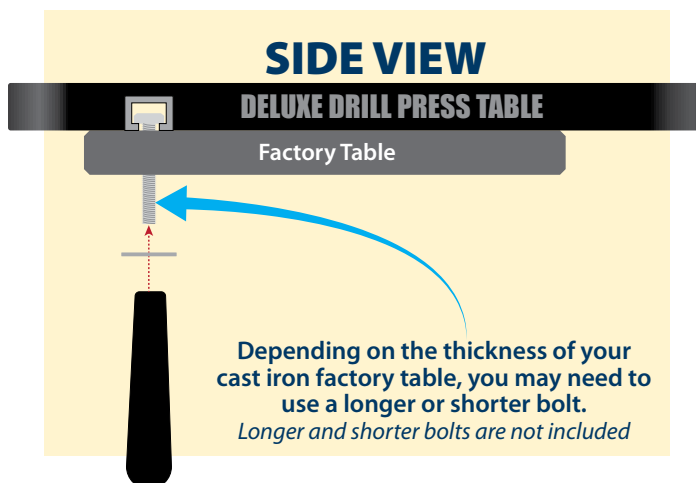
THROUGH SLOT

FACTORY TABLE TOP



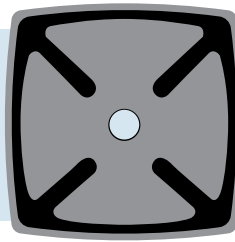
The through slot table top is the most common factory table top and allows the Fulton Deluxe Table top to be mounted using the included post knob and bolt hardware.

Slide the two 3/8"x16x2" (22) Hex Head Bolts into the 24" long track (21) that is mounted to the bottom of the table. Position the bolts so they line up with two of the through slots on the factory table top. Place the Fulton Drill press table on to the factory table top so the bolts drop through the slots. Secure the table top using the post knobs and washers as shown here.



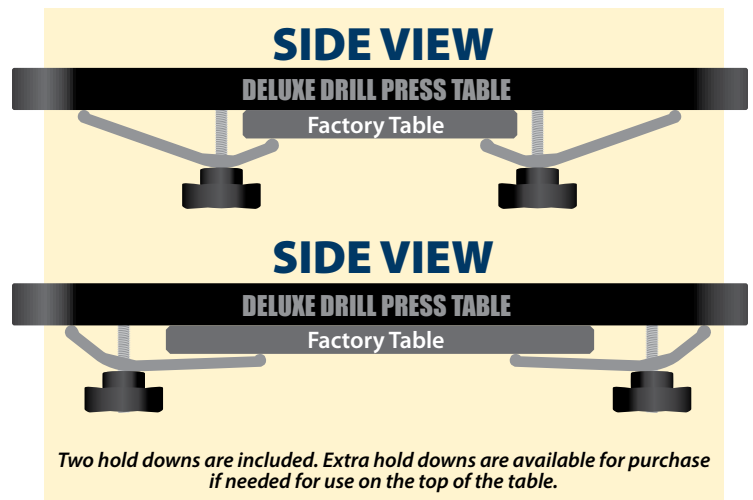
SOLID SURFACE / INTERNAL SLOT

FACTORY TABLE TOP



Typically found on smaller or bench top drill press machines, the internal slot table tops require the use of Hold Down Clamps to mount the Fulton Deluxe Table Top.

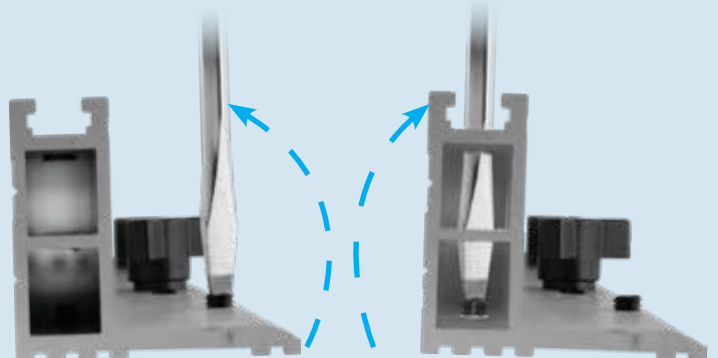
Place the Fulton Deluxe Drill Press Table on to your factory drill press table and the two tables. Slide one aluminum 3/8" hex head bolt hold downs (20) into one side of the 24" track (21) and the another into the opposite side. Secure the Fulton Deluxe Drill Press Table to the factory table by clamping the two sides as shown below. The clamps may be used in either direction depending on the size and thickness of the factory table top.



FULLY ADJUSTABLE FENCE

Rotate the two set screws on the back of the fence to tip the fence forward

Rotate the two set screws on the front of the fence to tip the fence back



Once installed, the aluminum fence can be adjusted for squareness if needed simply by rotating two of the four set screws with a screwdriver as shown above. This eliminates the need for using those tough to find shims.

HOW TO USE THE **FLIP STOP**



The convenient flip stop is designed to make repetitive and accurate drilling much easier. Simply insert the flip stop into the top track of the fence. Then line the flip stop up to the mark you need it to be placed and secure with the t-knob. Once the stop is positioned and secured, this will allow you to drill a hole at the exactly same location on different boards or you can move the stop to where ever you need it along the entire length of the fence.

ZERO CLEARANCE **INSERT PLATE**



Metal drill press tables don't allow you to drill all the way through your stock. With a zero clearance insert and a large $3\frac{5}{8}$ " diameter opening along with a full $1\frac{3}{8}$ " thick table, you'll be able to bore out through holes ease with the Fulton Drill Press Table. Not to mention the zero clearance also helps prevent tear-out on the bottom of your work piece. The zero clearance insert plate (25) is easy to remove and it can be leveled by simply adjusting the pre-installed 4 leveling screws.

CONVERT YOUR DRILL PRESS INTO A **DRUM SANDER**



Simply drill a hole in the zero clearance insert that is slightly larger than your sanding drum diameter to create the perfect size opening for sanding your project. The $3\frac{5}{8}$ " opening underneath the insert allows you to drop the drum sander below the surface of the table top to ensure complete sanding surface coverage and optimal sanding results. Using drum sanders on your drill press with this table is almost like using one of those expensive drum sanding machines without spending the big money for one.

IDEAL FOR BENCH TOP OR FLOOR **DRILL PRESSES**



The Fulton® Deluxe Drill Press table is approximately 15 " x 24 " x $1\frac{3}{8}$ " thick and it works with most any drill press machine and provides you with much more versatility. Whether you have a bench top or floor model drill press the Fulton Deluxe Drill Press Table is the perfect woodworkers table top solution.